

# Seeking Participants

---

The study lasts approximately 10-13 hours over 5 visits and pays up to \$110-\$260.

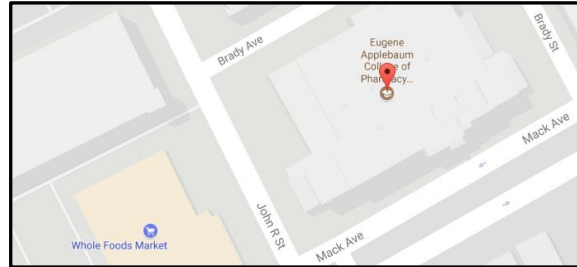
## Participant criteria:

- Prior experience with an extremely upsetting or traumatic event
  - (See left panel)
- 18-60 years old
- In good health
- Normal (or corrected-to-normal) vision
- Right-handed
- Not pregnant or trying to become pregnant



# WSU Location

---



# Contact Us

---

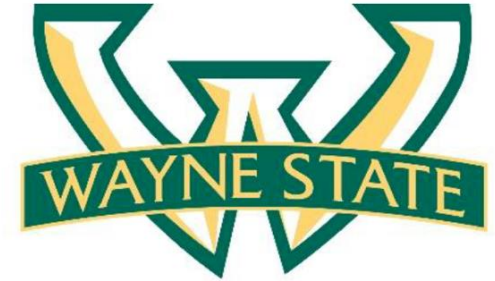
Wayne State University  
Eugene Applebaum College of  
Pharmacy & Health Sciences  
Department of Pharmacy Practice  
259 Mack Ave.  
Detroit, MI 48201

(313) 577-5404

[tnp2lab.org](http://tnp2lab.org)

# Have You Ever Experienced a Traumatic Event?

---



## Eugene Applebaum College of Pharmacy and Health Sciences

Investigating the effects of an FDA-approved medication on PTSD and memory retention

Email : [tnp2lab\\_volunteer@lists.wayne.edu](mailto:tnp2lab_volunteer@lists.wayne.edu)

Phone : (313) 577-5404

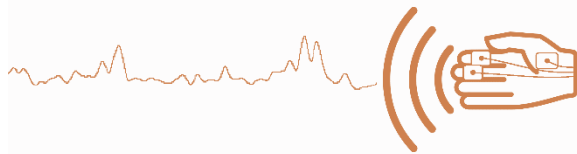
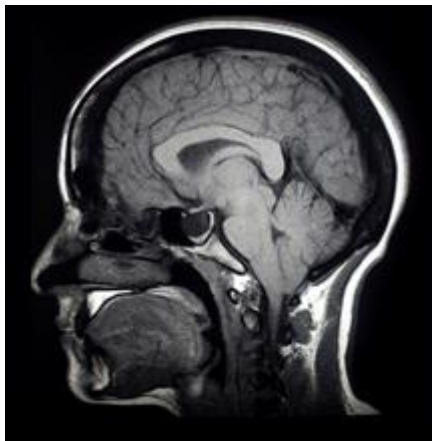


# Participant Criteria

---

Have you ever experienced an extremely upsetting event such as:

- Natural disaster?
- Serious accident?
- Sudden death of a loved one?
- Serious medical condition?
- Combat?
- Rape or other violent assault?
- Any other life-threatening event?



*A participant experiencing a simulated environment task.*

---

As a result, have you experienced any of the following in the past month?

- Intrusive distressing thoughts about the event
- Nightmares or flashbacks
- Avoiding places, people, and activities that are reminders of the event
- Feeling cut off from others
- Difficulty sleeping
- Feeling jumpy
- Easily irritated and angered
- Increased anxiety

# Study Focus

---

This study will investigate how the FDA-approved medication, Marinol, is related to the brain's processing of fear and memory retention.

If you believe you may be eligible and are interested please email: [tnp2lab\\_volunteer@lists.wayne.edu](mailto:tnp2lab_volunteer@lists.wayne.edu) or call: (313) 577-5404

Participants will complete a psychiatric interview to determine if they qualify for the study.

